



21 January 2015

15-028PV

To the Residents,
Neighbourhood of Withers St
West Wallsend

APPLETREE GROVE ESTATE – STAGE 4

Dear Residents,

KCE wishes to advise that construction will begin shortly on Stage 4 of the Appletree Grove Estate that is being developed by Hammersmith Management.

The construction works will include clearing, earthworks, construction of new roads and footpaths, landscaping, installation of stormwater drainage, water and sewer reticulation and installation of other services such as power and communications.

These works will be occurring on the land in the near vicinity of your property and the initial works will be to adequately fence and delineate this area (Please refer to the attached aerial view plan which shows the general site layout).

KCE regrets any inconvenience this works may cause you and will aim to keep the disruption to a minimum. We appreciate your patience and cooperation and will endeavour to complete the project in the shortest possible time frame.

If you have any questions or concerns regarding this project, please feel free to contact myself on (02) 4922 5000.

Yours sincerely,

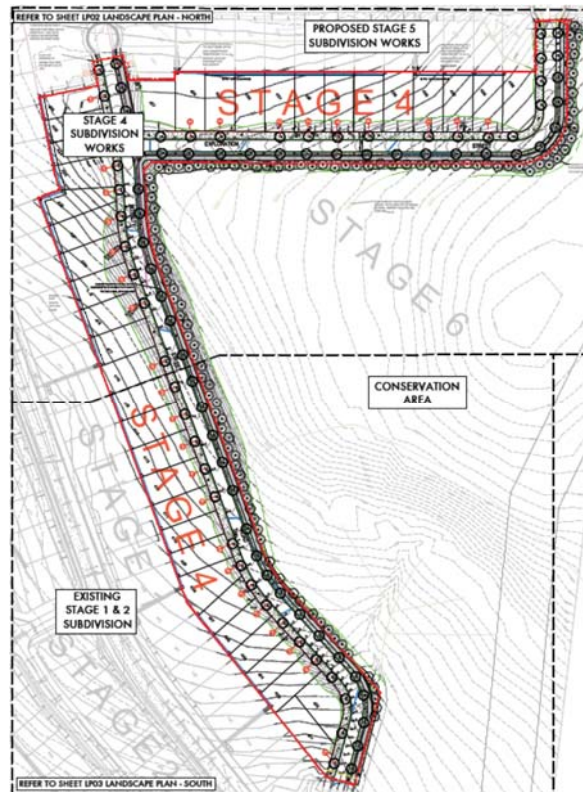
Paul Van Der Velde
Project Manager



KCE Pty Ltd trading as KCE ACN 059 721 881 ABN 83 059 721 881
1 Balbu Close Beresfield NSW 2322 PO Box 574 East Maitland NSW 2322
P: 02 4922 5000 F: 02 4922 5001 E: mail@kce.com.au W: www.kce.com.au



General site layout – Stage 4 Appletree Grove Estate



General design – Stage 4 Appletree Grove Estate



KCE Pty Ltd trading as KCE ACN 059 721 881 ABN 83 059 721 881
 1 Balbu Close Beresfield NSW 2322 PO Box 574 East Maitland NSW 2322
 P: 02 4922 5000 F: 02 4922 5001 E: mail@kce.com.au W: www.kce.com.au